



# SKYWARD HOMES

A Project By:

SKYWARD  
PROPERTIES (PVT) LTD.

Visualized By:



**Head Office:** Plaza 246, Ground Floor, Spring North Commercial, Bahria Town Phase-7, Rawalpindi, Pakistan.  
**UAN:** (03) 111 666 638 - **Website:** [www.skywardproperties.pk](http://www.skywardproperties.pk)

Disclaimer: The views, plans and layout shown are artist's impression only. **SKYWARD HOMES** reserves the right to change these specifications, plans and amenities without prior notice in the interest of quality and timely delivery. We assure that any such changes made will not, in any way, be detrimental to the quality of the building any suggestion will be appreciated.

ULTIMATE AND ASTUTE

*Urban Living*





## IDEAL FOR LAND INVESTMENTS

Considered one of the world's most beautiful capitals, Islamabad is renowned for its green hills and eco-friendliness, harmony and neatness. Islamabad is recently considered the perfect city for land investment. An amazing residential project is arising that will surpass any other investment opportunity... Skyward Homes.





# S K Y W A R D

---

## PROPERTIES (PVT) LTD.

## ABOUT THE CREATORS

Skyward Properties (Pvt) Ltd., takes pride in being one of the leading and admired real estate companies in the twin cities. With exceptional skills and proven competencies in properties, construction and designing, Skyward Properties (Pvt) Ltd., is setting the benchmark of the finest real estate, striving to exceed the client's expectations. Over the last decade, the company presented many major projects in the country. These projects reflect the strength, versatility and performance that it has proven in the construction industry.



# LOCATION

This wonderful residential is perfectly positioned at New City Society Wah, Phase II, Block I, Brahma Jhang Bahtar Interchange, CPEC Motorway, M-1, New City Arcade Islamabad. Skyward Homes is near the famous Redwood International School, Mehfil Restaurant, WAH Business School and many significant education, entertainment and commuting areas.



# THE TRUE ESSENCE OF LUXURIOUS LIFESTYLES

Skyward Homes are wonderfully crafted for those seeking the embodiment of extravagance in the capital city. Each exclusive unit is finished to exquisite standards of comfort and refinement, from soaring ceilings to top-notch fixtures and from spacious rooms to large balconies. We have created the perfect home-life balance for our future residents.







Life is nothing if there is no luxury and no rest. A luxurious world full of colour is being created. Where one can spend an entire life with zest. A wonderful world full of hopes, ambitions and happiness Skyward Homes an oasis of luxury is ready for you to. Enjoy contemporary luxurious lifestyles.



# A UNIQUE FEATURE

Expansive inspiring common terraces are a unique feature that leads to your dream home. These perfectly articulated areas are ready to open the doors of first-class living.

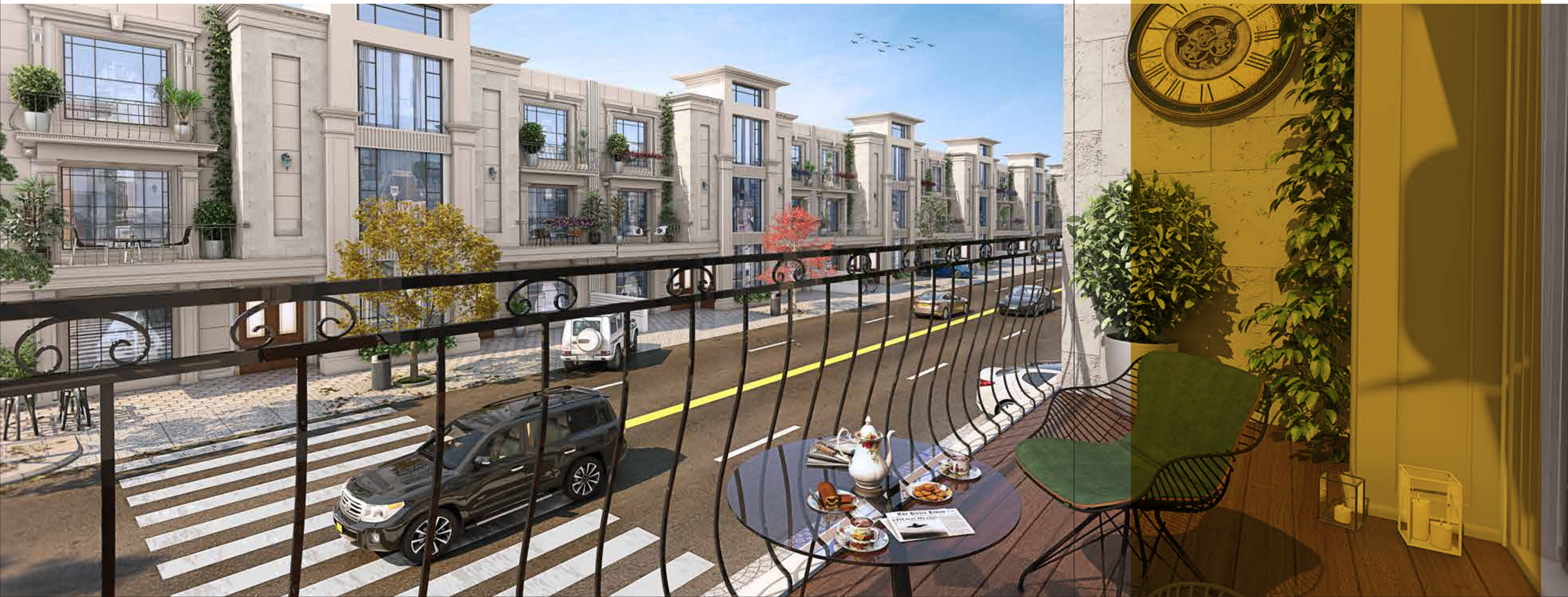


# STYLISH LIVING FASHIONABLE LIFESTYLES

Your grin of pride in your dream home at Skyward Homes comes during a visit by an old friend, the harmony of companions, or the chuckling of youngsters at play. Yes, you have made the perfect decision, so enjoy the most comfortable and trendiest living in the home that you have been wishing for.







# MAGNIFICENT CITYSCAPE FROM YOUR TERRACE

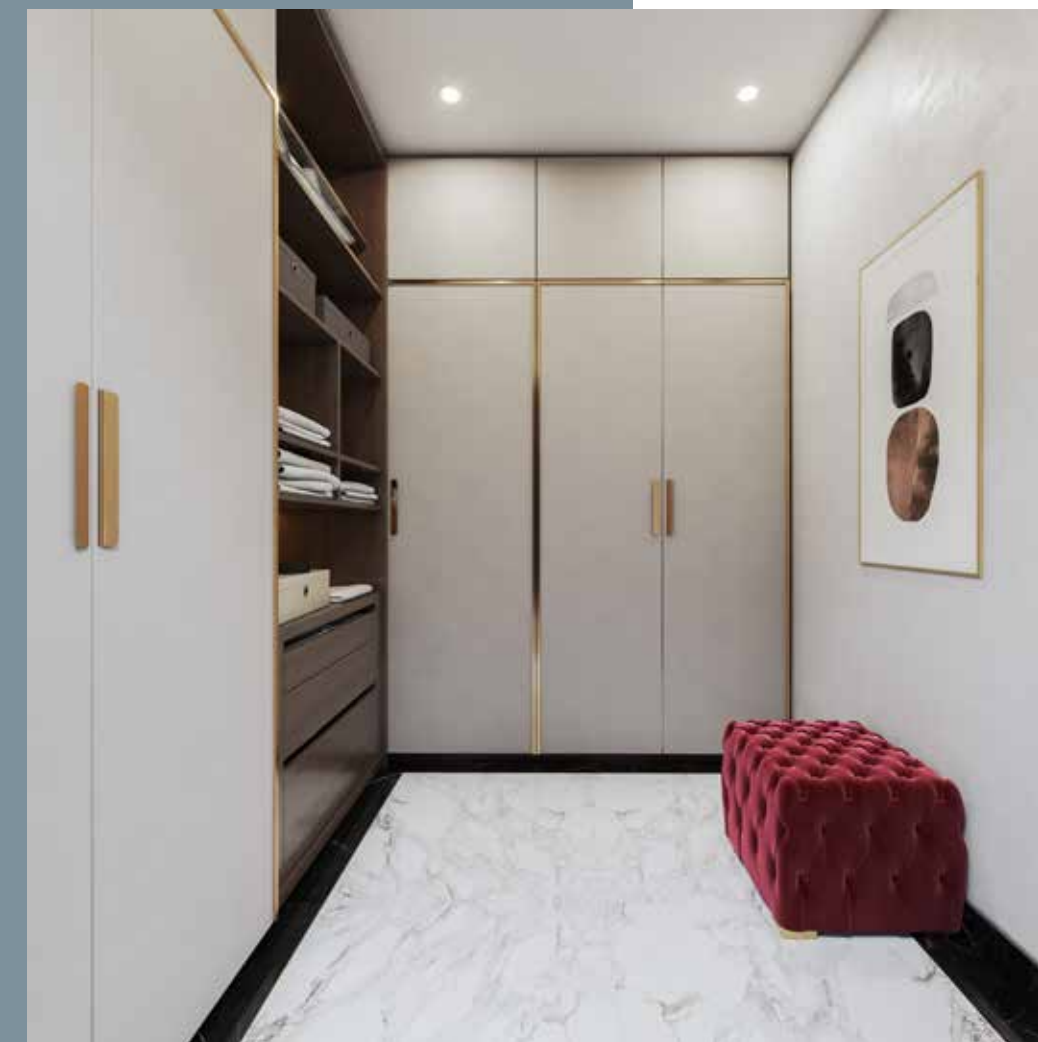
The icing on the cake is your terrace, with breath-taking views down below. The magnificent design makes this amazing modern community focused on prime living close to nature while enjoying an urban contemporary life.



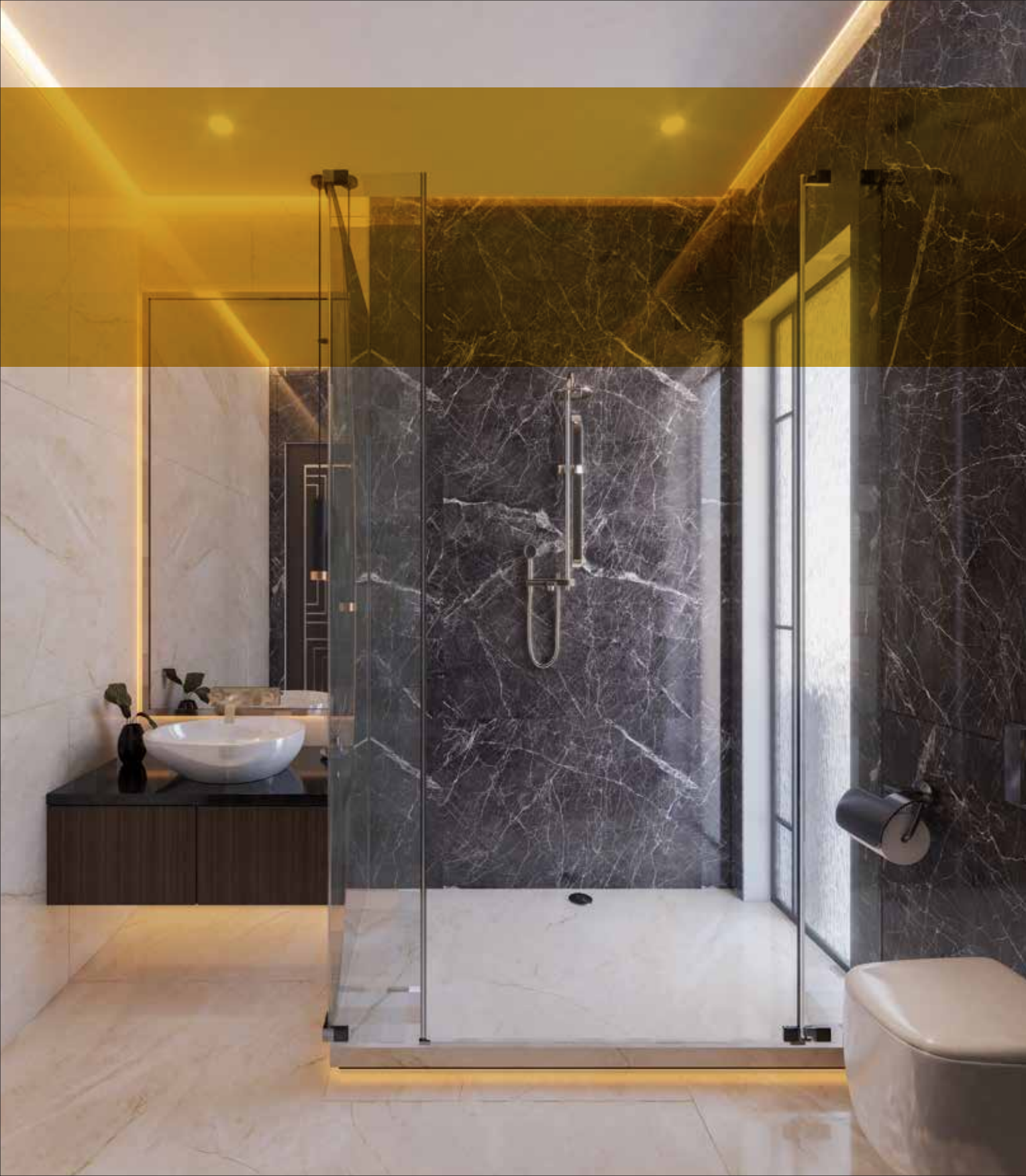


# SERENE MAGNIFICENCE

The master bedroom is your perfect sanctuary, where you can sleep peacefully and wake up fresh. The immaculately spacious and artistically styled bedroom with the tranquil ambience and a large closet area is your favourite room of your home.







## A STYLISH KITCHEN

The kitchen at Skyward Homes is stylish and vogueish and its cabinets and fore-ceiling are pre-fixed with quality fittings. The modern bathroom is fully equipped with high-quality fixtures and fittings, making it vogueish and better viable.





# A MAJESTIC AND TIMELESS ARCHITECTURE

The architecture of this magnificent project is contemporary and texture-rich presenting a variety of expressive qualities for modern designs.

